

Nuvoton Nu-Link / Nu-Link PRO Debug Adapter User Manual



LogicTech Inc

서울시구로구구로동615-3

STX W타워813-1호

Tel : 070-7526-1209

Fax : 070-2675-1209

Sales & Tech : albatini.song@logictech.kr

커스터마이징및신규개발문의환영합니다.

Table of Contents

1	INTRODUCTION.....	3
2	HARDWARE SPECIFICATIONS	4
2.1	Nu-Link-Pro	4
2.2	Nu-Link	5
2.3	Nu-Link-Me	5
2.4	Nu-Link-Me (On-board Version)	6
2.5	Nu-Link Adapter Hardware Specifications	6
3	MAIN FUNCTIONS	8
3.1	Debugging	9
3.1.1	Debug Mode	9
3.1.2	Breakpoints	9
3.1.3	Direct Register Control Interface	9
3.1.4	Semihost	11
3.2	Programming	12
3.2.1	Online Programming	12
3.2.2	Offline Programming	12
3.2.3	Software Serial Number (SN)	13
3.3	Wide Voltage Programming	14
3.4	Installing the Nu-Link Adapter Driver	14
4	INSTALLATION AND SETUP	15
4.1	Connecting to the Nu-Link Adapter	15
4.2	Software Setup	16
4.2.1	ICP Tool	16
4.2.2	Keil RVMDK	19
4.2.3	IAR EWARM	22
4.2.4	CooCox ColDE	25
5	+APPENDIX	27
5.1	Nu-Link Adapter Operating Current	27
6	REVISION HISTORY	28



1 Introduction

Nuvoton's Nu-Link Debug Adapter is an USB debugger and programmer based on the SWD (Serial Wire Debug) signal interface and can be applied to the development of Nuvoton NuMicro™ Family chips. As shown in Table 2-1, there are three types of the Nu-Link Debug Adapter in accordance with different specifications, including Nu-Link-Pro, Nu-Link, and Nu-Link-Me. The three types are called "Nu-Link Adapter" in general if no specific conditions are mentioned.

The Nu-Link Adapter supports ICP (In-Circuit Programming) based on the SWD (Serial Wire Debug) signal interface. The user can employ the NuMicro™ ICP Programming Tool to update chip firmware for mass production. The Nu-Link Adapter also supports the third-party development tools, such as Keil RVMDK, IAR EWARM, and CooCox CoIDE.

For simplicity and clarity, parts of specific terms in this user manual are contracted or abbreviated, as listed in the following table.

Short Name	Full Name
Nu-Link Adapter	Nuvoton Nu-Link Debug Adapter
NuMicro™ Family	Nuvoton NuMicro™ Family
ICP Tool	Nuvoton NuMicro™ ICP Programming Tool
Keil RVMDK	Keil ARM RealView Microcontroller Development Kit (MDK-ARM®)
IAR EWARM	IAR Embedded Workbench for ARM
CooCox CoIDE	CooCox Integrated Development Environment
SWD	Serial Wire Debug
ICP	In-Circuit Programming



2 Hardware Specifications

The Nu-Link Adapter provides an USB connector and a SWD signal interface for connecting to the target chip. The user can connect the Nu-Link Adapter to an USB port of a PC to debug and program target chips through the development software tools. As shown in Table 2-1, there are three specifications for the Nu-Link Adapter, in which debugging, Online/Offline Programming, and SWD I/O voltage settings may be supported depending on the specifications (refer to the +Appendix for details).

Table 2-1 Nu-Link Adapter Function Comparison

Function	Type	Nu-Link-Pro	Nu-Link	Nu-Link-Me
Debugging		✓	✓	✓
Online Programming		✓	✓	✓
Offline Programming		✓	✓	
Multi SWD I/O Voltage		✓		
SWD I/O Voltage Support		1.8V, 2.5V, 3.3V, 5.0V	5.0V	3.3V (default), 5.0V (3.3V for On-board version only)

2.1 Nu-Link-Pro

The Nu-Link-Pro is a full-functional debugger and programmer with debugging, online/offline programming, and SWD I/O voltage setting functions. As shown in Figure 2-1, the Nu-Link-Pro includes an USB port that can be connected to a computer host, a set of Status LEDs, an offline programming button, a SWD port that can be connected to a target chip for debugging and programming (the voltage level of the SWD port can be adjusted through software as 1.8V, 2.5V, 3.3V, or 5.0V), a set of SWD I/O voltage LEDs and SWD Power Output LEDs.

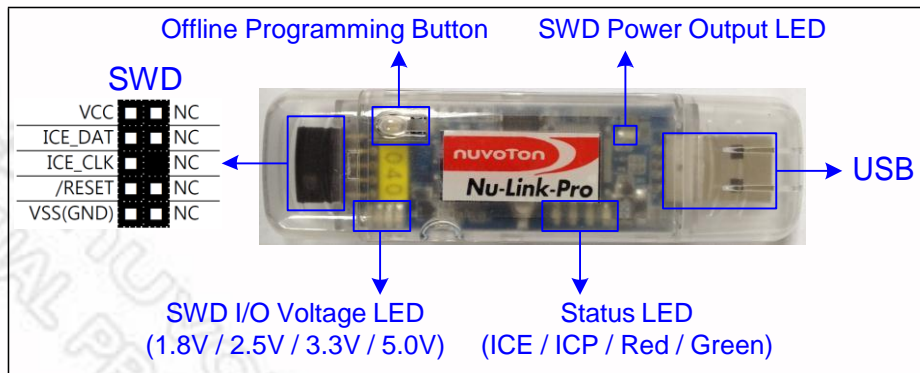


Figure 2-1 Nu-Link-Pro Configuration



2.2 Nu-Link

The Nu-Link is a basic debugger and programmer with debugging and online/offline programming functions. As shown in Figure 2-2, the Nu-Link includes an USB port that can be connected to a computer host, a set of Status LEDs, an offline programming button, and a SWD port that can be connected to a target chip for debugging and programming (the default voltage of the SWD port as 5.0V).

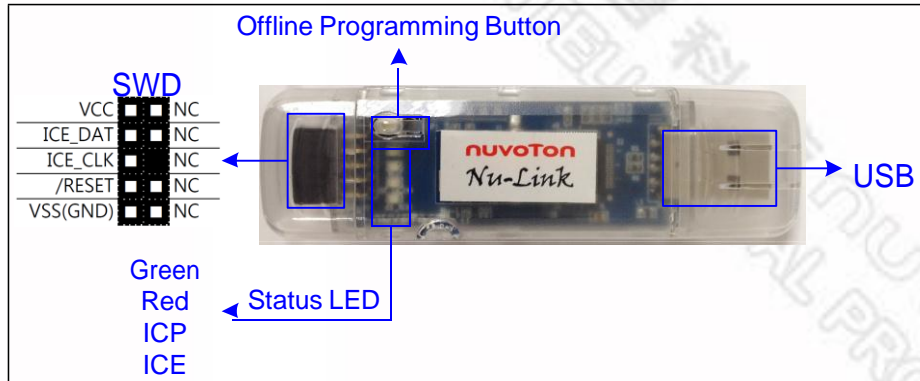


Figure 2-2 Nu-Link Configuration

2.3 Nu-Link-Me

The Nu-Link-Me is a simple debugger and programmer with debugging and online programming functions, which is only shipped with the NuTiny-SDK kits and can be used stand-alone for developing the customized NuMicro™ Family system. As shown in Figure 2-3, the Nu-Link-Me includes an USB port that can be connected to a computer host, a set of Status LEDs, a Power Switch to switch the voltage of Nu-Link-Me between 3.3V and 5.0V (the default as 3.3V), a SWD port that can be connected to a target chip for debugging and programming (whose voltage is adjustable with the Nu-Link-Me). A Cortex Debug port is provided in parts of the version only for connecting to Keil's MCBNUC1XX board. The pins of the Cortex Debug port conform to those of the SWD port, except the pin order.

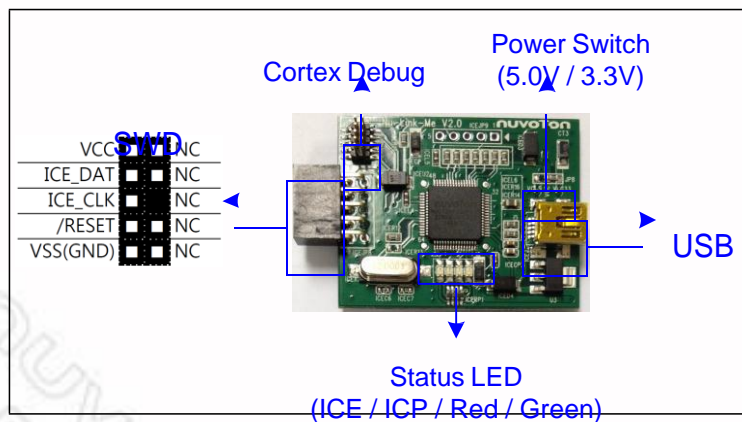


Figure 2-3 Nu-Link-Me Configuration



2.4 Nu-Link-Me (On-board Version)

The main functions of the Nu-Link-Me on-board version, including debugging and online programming, are the same as those of the Nu-Link-Me. The Nu-Link-Me on-board version is provided with all NuMicro™ Family series. The user does not need to prepare a debugger when using a learning board. The Nu-Link-Me on-board version includes an USB port that can be connected to a computer host, a set of Status LEDs, and a SWD port connected to the chip on the learning board (default) for debugging and programming (external connection is not supported). The SWD port voltage is always 3.3V.

The learning boards that support the Nu-Link-Me on-board version are listed below:

- Nu-LB-NUC140
- Nu-LB-M051
- Nu-LB-Mini51

2.5 Nu-Link Adapter Hardware Specifications

The Nu-Link Adapter hardware comparison is shown in Table 2-2.

Table 2-2 Nu-Link Adapter Hardware Comparison

Device	Description	Nu-Link-Pro	Nu-Link	Nu-Link-Me	Nu-Link-Me on-board ver.
USB	Connected to an USB port of a PC to use the Nu-Link Adapter or download offline programming firmware	✓	✓	✓	✓
SWD	Connected to the target chip for debugging and programming	✓	✓	✓	
Status LED	Display the operation status of the Nu-Link Adapter	✓	✓	✓	✓
Offline Programming Button	Click this button to proceed with offline programming	✓	✓		
SWD Power Output LED	Display the power output status of SWD VCC pins	✓			
SWD I/O Voltage LED	Display the SWD VCC and I/O voltage	✓			
Power Switch	Power switch between the power output of the Nu-Link-Me power (e.g. between the SWD VCC and I/O pins)			✓ ^{*1}	
Cortex Debug	Able to connect to Keil's MCBNUC1XX board for debugging and programming			✓ ^{*1}	

*1 Only supported in parts of the version.



Table 2-3 SWD I/O Voltage LEDs and SWD Power Output LEDs Status List

Power Status	Target System Power	SWD Power Output	SWD I/O Voltage LED			
			1.8V	2.5V	3.3V	5.0V
SWD port I/O and VCC voltage as 1.8V	-	On	On	-	-	-
SWD port I/O and VCC voltage as 2.5V	-	On	On	On	-	-
SWD port I/O and VCC voltage as 3.3V	-	On	On	On	On	-
SWD port I/O and VCC voltage as 5.0V	-	On	On	On	On	On
SWD port I/O voltage as 1.8V	✓(1.8V)	-	On	-	-	-
SWD port I/O voltage as 2.5V	✓(2.5V)	-	On	On	-	-
SWD port I/O voltage as 3.3V	✓(3.3V)	-	On	On	On	-
SWD port I/O voltage as 5.0V	✓(5.0V)	-	On	On	On	On

Table 2-4 Status LEDs Difference List

Nu-Link Adapter Operation Status	Status LED			
	ICE	ICP	Red	Green
Boot	Flashx3	Flashx3	Flashx3	Flashx3
One Nu-Link Adapter selected to connect	Flashx4	Flashx4	Flashx4	On
ICE Online (Not connected with a target chip)	On	Any	-	-
ICE Online (Connected with a target chip)	On	Any	-	On
ICE Online (Failed to connect with a target chip)	On	Any	Flash	On
During Offline Programming	-	On	-	Flash Slowly
Offline Programming Completed	On	-	-	-
Offline Programming Completed (Auto mode)	On	On	-	-
Offline Programming Failed	On	Flash	-	-



3 Main Functions

The Nu-Link Adapter provides complete debugging and programming functions for NuMicro™ Family and supports a number of third-party development tools. The detailed function support is listed in Table 3-1.

Table 3-1 Nu-Link Adapter Functions

Function	Software	ICP Tool	Keil RVMDK	IAR EWARM	CooCox CoIDE
Debugging			✓	✓	✓
Breakpoints			✓	✓	✓
Direct Register Control Interface			✓	✓	✓ ^{*1}
Semihost			✓	✓	✓
Online Programming		✓	✓	✓	✓
Offline Programming ^{*2}		✓			
Software Serial Number		✓			
Wide Voltage Programming ^{*3}		✓	✓	✓	
Multi Nu-Link Adapter Support		✓	✓	✓	
Nu-Link Adapter Driver Installation			✓	✓	

*1 Core registers view is supported; peripherals view is not supported.

*2 Supported for Nu-Link and Nu-Link-Pro.

*3 Supported for Nu-Link-Pro.





3.1 Debugging

This section briefly describes the debugging function supported by the Nu-Link Adapter. For more details, please refer to the related user manuals.

3.1.1 Debug Mode

The Nu-Link Adapter supports debugging for the NuMicro™ Family chips based on the SWD signal interface. The third-party tools that support using the Nu-Link Adapter for chip debugging include Keil RVMDC, IAR EWARM, and Coocox ColDE. Some more functions supported in Debug mode are described as follows.

3.1.2 Breakpoints

In Debug mode, the user can add breakpoints in the code for debugging. During the real-time simulation of the Nu-Link Adapter, the chip simulation will be stopped at a specific breakpoint. Figure 3-1 shows the breakpoint settings in Keil RVMDC Debug mode. The red labels on lines 052 and 059 indicate the breakpoints inserted; the yellow arrow refers to the code to be executed next and shows the register value of Program Counter (PC) (i.e. “R15(PC)=0x0000D04” in the **Registers** pane in Figure 3-1).

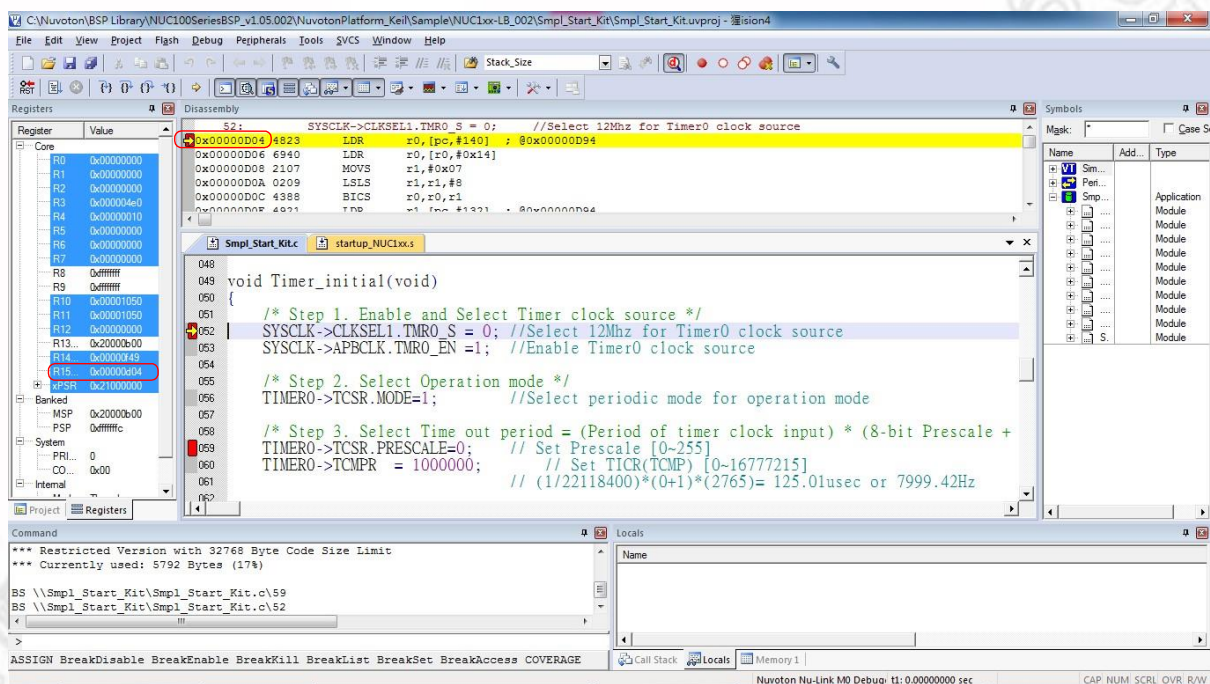


Figure 3-1 Setting Breakpoints in Keil RVMDC Debug Mode

3.1.3 Direct Register Control Interface

The Direct Register Control Interface can be used to display the register content in a target chip and manipulate the registers. Take Keil RVMDC Debug mode for example, invoke the **Debug** command and select a register from the “function register list” (e.g. ADC, CAN, CLK, etc.) to open the Direct Register Control Interface of the selected register, as shown in Figure 3-2.

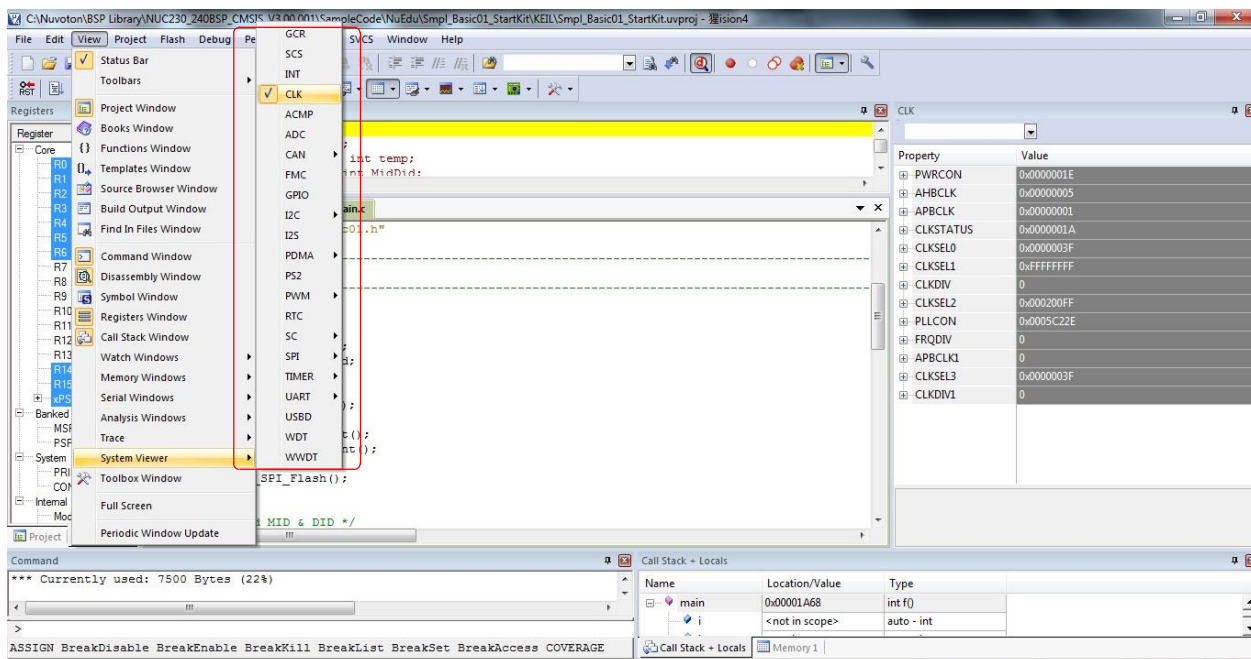


Figure 3-2 Direct Register Interface Control Related Options in Keil RVMDK Debug Mode

The Direct Register Control Interface for CLK is shown in the left part of Figure 3-3, where the left column shows the register name, and the right column shows the register value. The Direct Register Control Interface for PWRCON is shown in the right part of the Figure 3-3, where the left column shows the function name, and the right column shows the function value.

Detailed Operation:

Double-clicking a “register value” will open the register control details, as shown in the right part of Figure 3-3.

The “register value” or “control value” can be modified directly. The Nu-Link Adapter will then modify the content of the target chip.

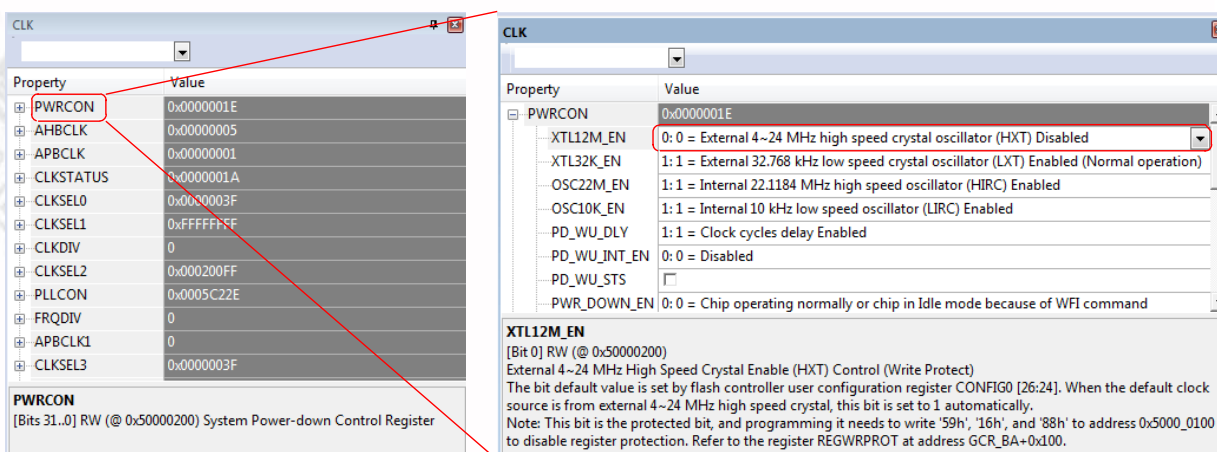


Figure 3-3 Direct Register Control Interface in Keil RVMDK Debug Mode



3.1.4 Semihost

When using the Semihost function, the message of the NuMicro™ Family microcontroller can be output through UART to the debug window by the Nu-Link Adapter. That is, the message is output without the GPIO. Figure 3-4 shows the debug messages in the “UART #1” form, which are the messages output by the Nu-Link Adapter.

Follow the steps below to use the Semihost.

Step 1: Modify the strings in the “retarget.c” as follows.

```
#define DEBUG_ENABLE_SEMIHOST // Add this line
#if defined(DEBUG_ENABLE_SEMIHOST)
/* The static buffer is used to speed up the semihost */
static char g_buf[16];
static char g_buf_len = 0;
# if defined( ICCARM__)
```

Step 2: Invoke **Rebuild** to rebuild a project and enter Debug mode.

Step 3: In Debug mode, invoke **View** → **Serial Windows** → **UART #1**, as shown in Figure 3-4.

Step 4: Press **F5** to program the target chip, and the debug messages are output to the *UART #1* form.

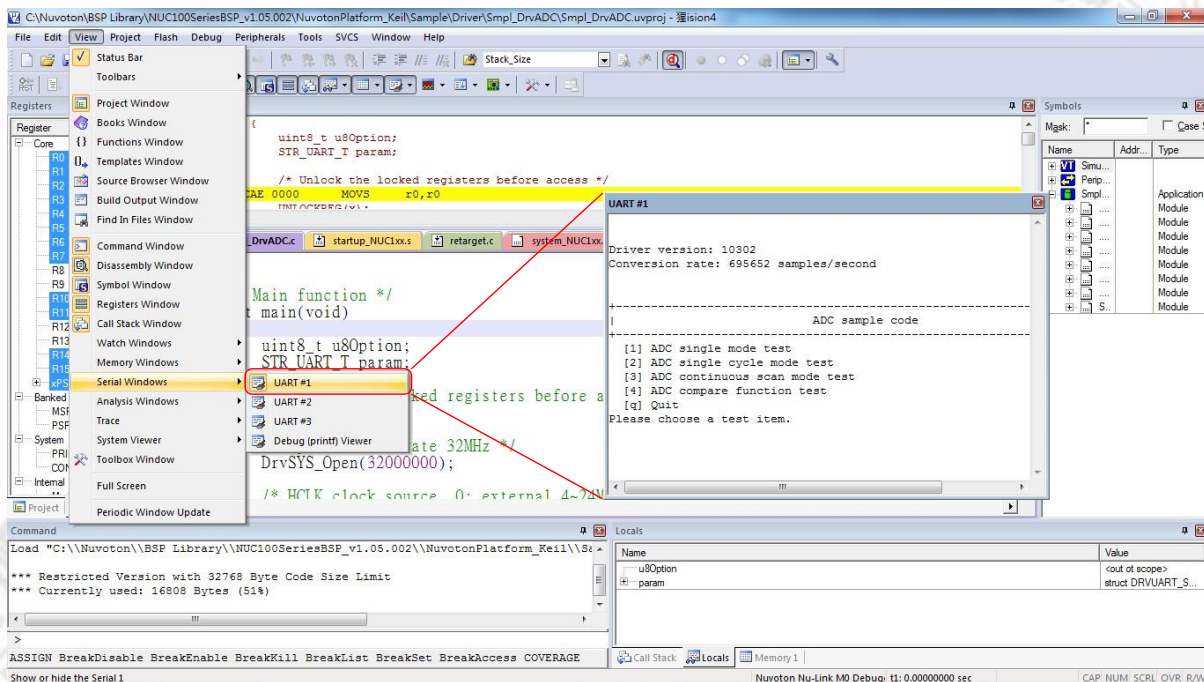


Figure 3-4 Semihost Options in Keil Debug Mode



3.2 Programming

This section will briefly describe the programming function supported by the Nu-Link Adapter. For more details, please refer to the related user manuals.

3.2.1 Online Programming

Online Programming means that the Nu-Link Adapter can download the firmware of the NuMicro™ Family single chip to the target chip through software programs, as shown in Figure 3-5.

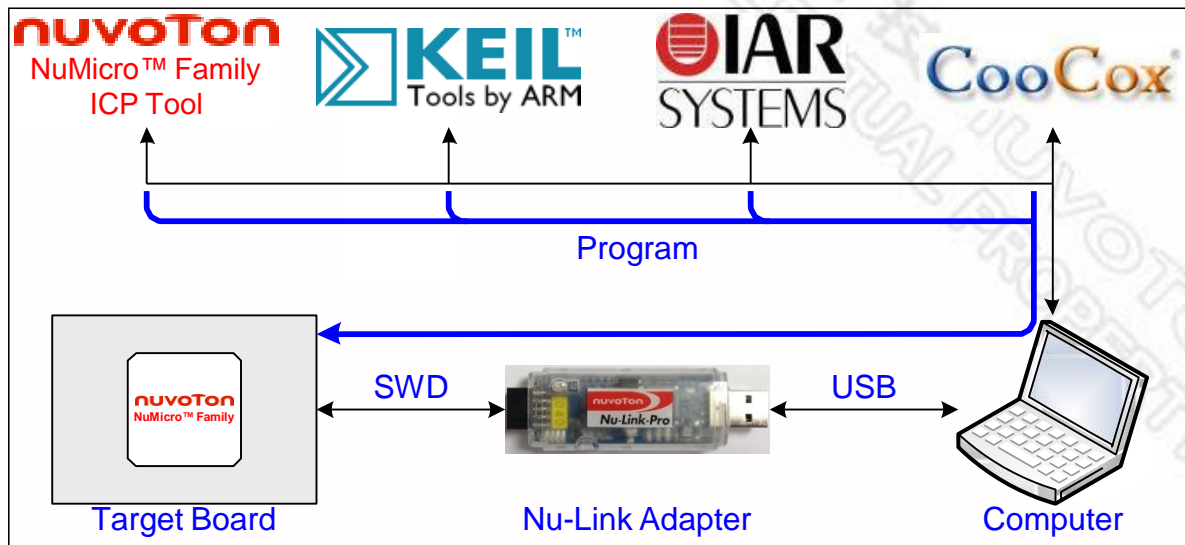


Figure 3-5 Online Programming Flow Diagram

3.2.2 Offline Programming

Offline Programming means that the Nu-Link Adapter can update the firmware of the NuMicro™ Family single chip directly without accessing software programs (as shown in Figure 3-6). Offline programming is useful for mass production since the original code or firmware file does not need to be delivered and only the Nu-Link Adapter is needed for mass production. In addition, the Nu-Link Adapter supports “Limited Offline Programming,” which can effectively control the authorized number of the firmware. For details, please refer to the ICP Tool User Manual.

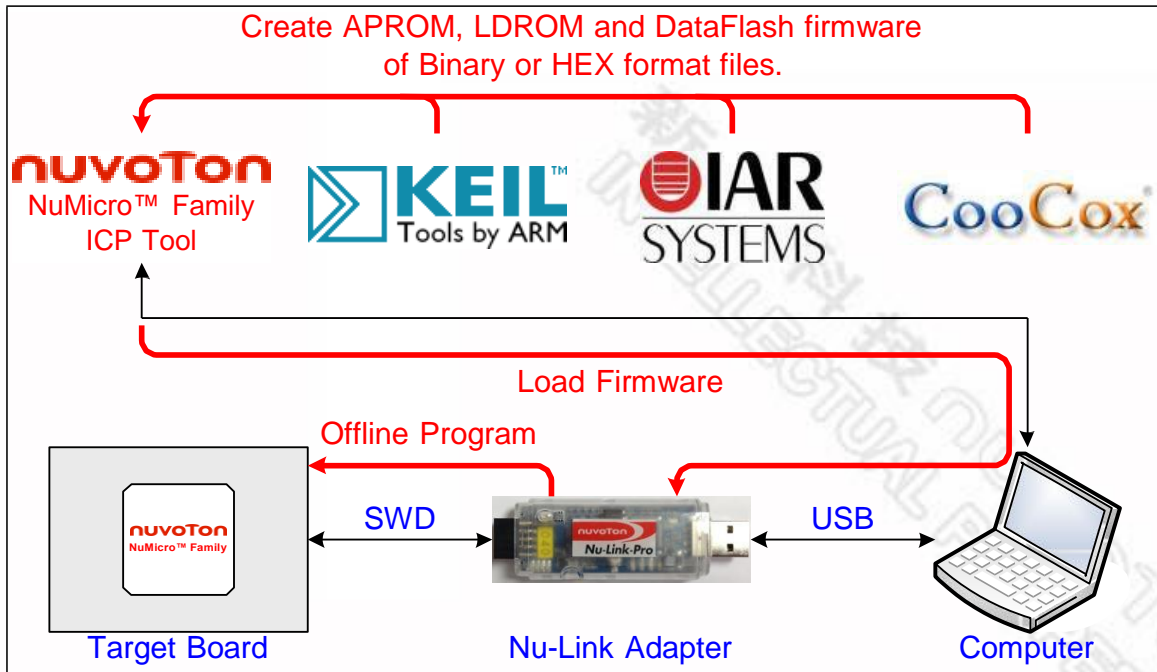


Figure 3-6 Offline Programming Flow Diagram

3.2.3 Software Serial Number (SN)

The Software Serial Number (SN) function provided by the ICP Tool enables users to specify the value in the “**Increase SN from**” and “**Write address in flash**” fields for the target chip during online/offline programming. Take the NUC140VE3CN chip for example, the user can specify a set of “Increased Serial Number (SN)” and “Write Address” to any of APROM, LDROM, and Data Flash, and the written Serial Number (SN) will be automatically incremented (as shown in Figure 3-7).

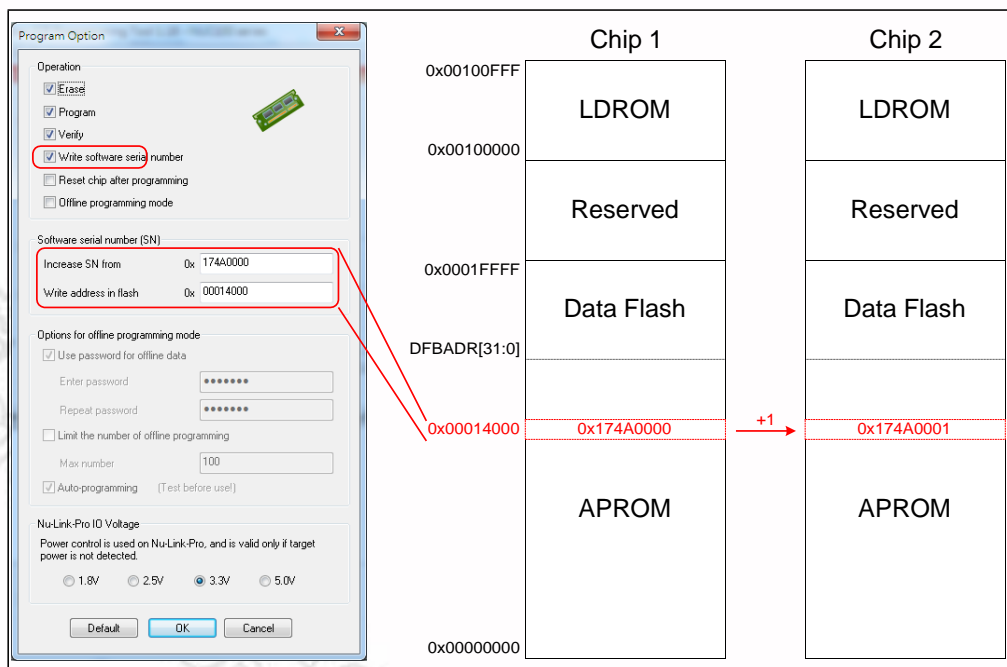


Figure 3-7 Software Serial Number (SN) Settings



3.3 Wide Voltage Programming

The Nu-Link-Pro supports the wide voltage programming function, by which the development software tool can adjust the SWD port voltage as 1.8V, 2.5V, 3.3V, or 5.0V. As shown in Figure 4-2, the pins that can be controlled include VCC, ICE_DAT, ICE_CLK, and /RESET.

Also, as shown in Figure 2-1, the Nu-Link-Pro provides a set of SWD I/O Voltage LEDs and SWD Power Output LEDs for checking the SWD port voltage. Refer to Table 2-3 for more details about the LED status,

3.4 Installing the Nu-Link Adapter Driver

The Nu-Link Adapter supports a variety of functions and third-party software tools (e.g. Keil RVMDK and IAR EWARM). After the software programs are installed, the drivers are also required. You can use the following links: [Nu-Link Adapter Driver for Keil RVMDK](#) and [Nu-Link Adapter Driver for IAR EWARM](#) to install the latest version. For details about software setup, please refer to section 4.2.



4 Installation and Setup

This chapter introduces how to connect the Nu-Link Adapter to a computer, and how to set the third-party tool to use the Nu-Link Adapter as a debugger and a programmer.

4.1 Connecting to the Nu-Link Adapter

As shown in Figure 4-1, the Nu-Link Adapter is a bridge between an USB and the SWD interface, by which software tools can debug and program the target chip through an USB. The user can plug the Nu-Link Adapter into an USB port of a PC directly or connect using the USB connector.

Through a SWD port, the Nu-Link Adapter can supply power (1.8V, 2.5V, 3.3V, or 5.0V) to a target circuit board. The maximum is 5V/500mA. Refer to Table 2-1 for detailed specifications.

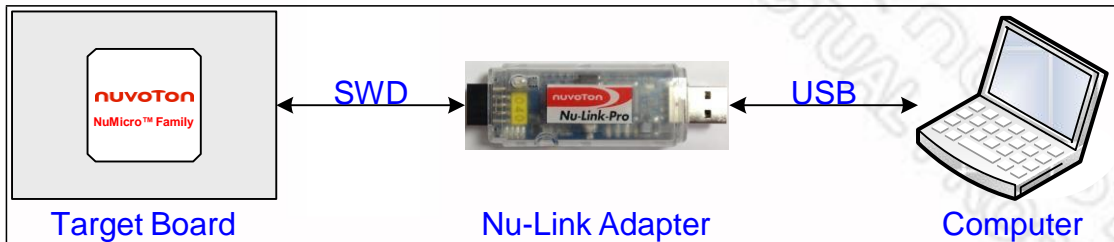


Figure 4-1 Nu-Link Adapter Connection Diagram

SWD Connector:

The SWD connector, which can be applied to all of the NuMicro™ development tools and evaluation boards, is a 100 mil (2x5) female header, as shown in the left of Figure 4-2.

Cortex Debug Connector:

The Cortex Debug connector, which can be applied to Keil's MCBNUC1XX board, is a 50 mil (2x5) male header, as shown in the right of Figure 4-2.

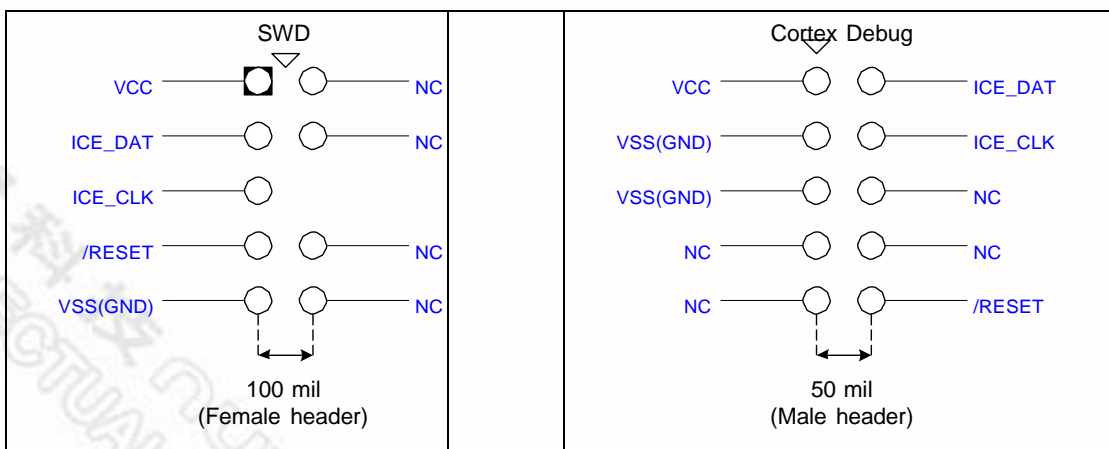


Figure 4-2 SWD and Cortex Debug Connector Pin Diagrams



4.2 Software Setup

This section briefly describes required software settings for connecting to the Nu-Link Adapter. For detailed software operation, refer to the related user manuals.

4.2.1 ICP Tool

Step 1: Download and install [Nuvoton NuMicro™ ICP Programming Tool](#).

Step 2: Open the ICP Tool, specify the **UI language** and **target chip**, and then click **Continue**, as shown in Figure 4-3.

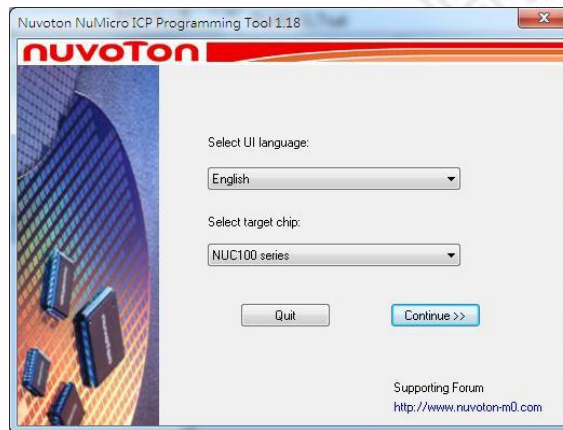


Figure 4-3 Startup Screen of ICP Tool

Step 3: In the ICP Tool window, the connection status is shown as “Disconnected” since the ICP tool has not been connected with the Nu-Link Adapter, as shown in Figure 4-4.

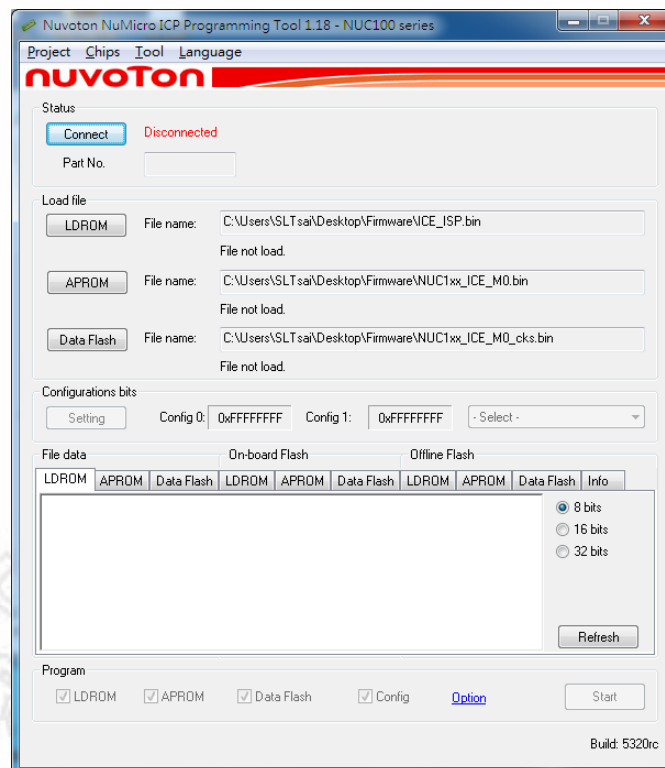


Figure 4-4 ICP Tool Main Window



- Step 4: Click **Option** in the **Program** section of the *ICP Tool Window* to open the *Program Option* form, as shown in Figure 4-5.
- Step 5: In the **Nu-Link Pro IO Voltage** section, specify the power voltage of the SWD port for the target chip, and then click **OK**. To use the offline programming function, the Offline Programming mode option needs to be selected, as shown in Figure 4-5.

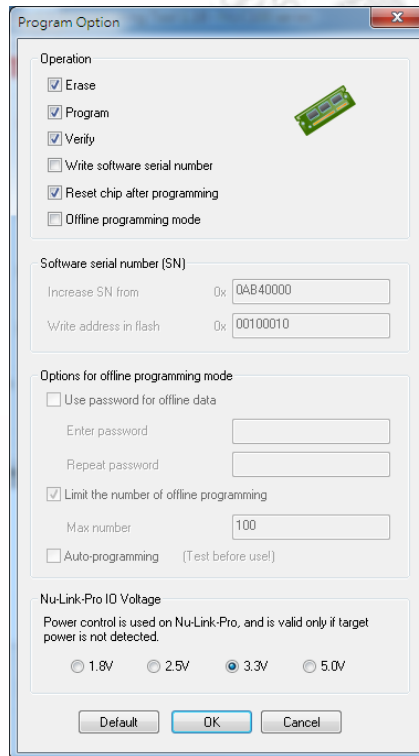


Figure 4-5 ICP Tool Programming Options

- Step 6: Return to the *ICP Tool window*, and then click the **Connect** button. Go to Step 5 if more than two Nu-Link Adapters are connected with the host. Go to Step 6 if only one Nu-Link Adapter is connected with the host.
- Step 7: If two Nu-Link Adapters have been connected with the computer, a message appears and asks to select one from the two adapters. Clicking **OK** will connect the selected adapter with the host, as shown in Figure 4-6. When a Nu-Link Adapter is selected for connection, the Status LED starts blinking. For the blinking details, refer to the Status LED description of the “Select a Nu-Link Adapter to connect with the host” in Table 2-4.

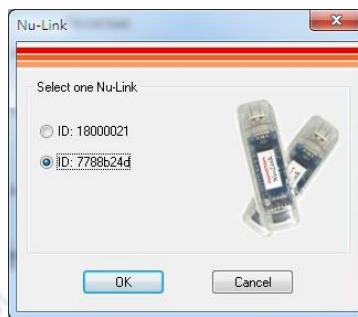


Figure 4-6 Select One Nu-Link Adapter



Step 8a: After the **Connect** button is clicked, the ICP Tool will be connected with the Nu-Link Adapter, and a SWD port will be detected. Figure 4-7 shows that the ICP Tool has been connected with the Nu-Link Adapter and a target chip is detected. At this time, the user can start programming the target chip.



Figure 4-7 Nu-Link Adapter Connected with a Target Chip Detected

Step 8b: Figure 4-8 shows that the ICP Tool has been connected with the Nu-Link Adapter with no target chip detected. The ICP tool will continue detecting the target chip until the **Stop Check** button is clicked. At this time, the user cannot program any chip, but can use the offline programming to save the offline programming information in the Nu-Link Adapter.



Figure 4-8 Nu-Link Adapter Connected with No Target Chip Detected

Step 9: Click the **Disconnect** button if programming is not needed (as shown in Figure 4-7). Or click the **Stop Check** button to disconnect the ICP Tool with the Nu-Link Adapter and leave the Nu-Link Adapter unused (as shown in Figure 4-8). As such, the Nu-Link Adapter can be connected with another tool.



4.2.2 Keil RVMDK

Step 1: Install [Keil RVMDK](#). Before setting the Nu-Link Adapter, make sure the [Nu-Link Adapter Driver for Keil RVMDK](#) has been downloaded and installed such that the Keil RVMDK can recognize the Nu-Link Adapter.

Step 2: Open the Keil RVMDK and open the project to be set.

Debugger Settings:

Step 3: Invoke **Project** → **Options for Target** → **Output**, and enable the **Debug Information** option, as shown in Figure 4-9.

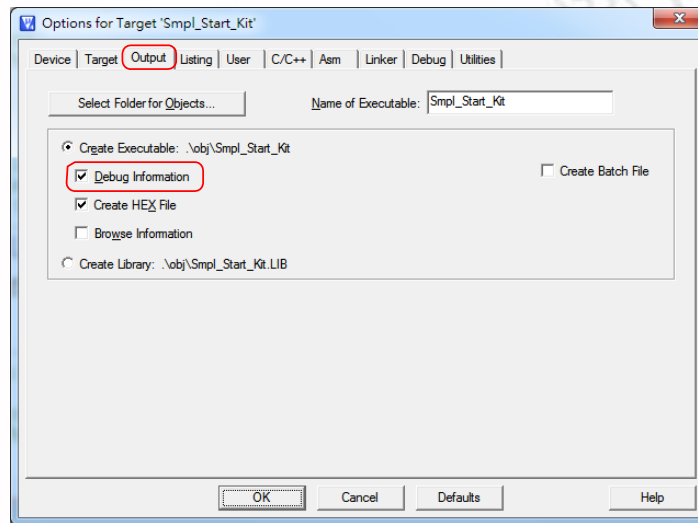


Figure 4-9 Enable Debug Information for Keil RVMDK

Step 4: Invoke **Project** → **Options for Target** → **Debug**, and make sure the **Use: Nuvoton Nu-Link M0 Debugger** option is checked, as shown in Figure 4-10.

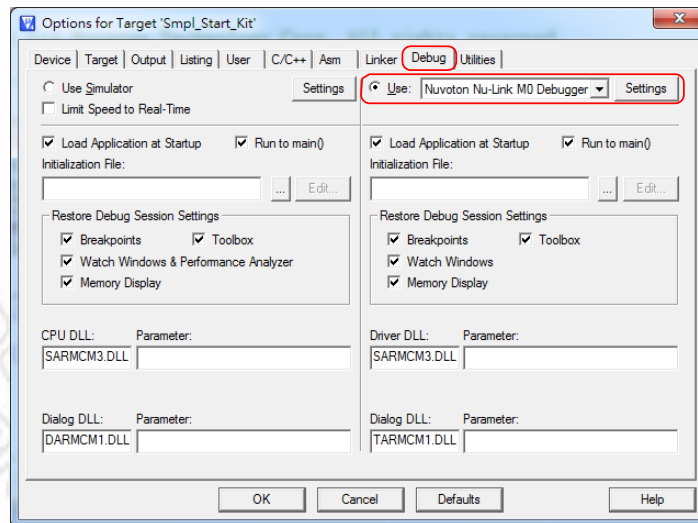


Figure 4-10 Keil RVMDK Debugger Selection



Step 5: Click the **Settings** button to open the *Debug* form, as shown in Figure 4-11. Refer to Table 4-1 for each setting description. The setting options shown in the *Debug* form may vary depending on the type of the Nu-Link Adapter used.

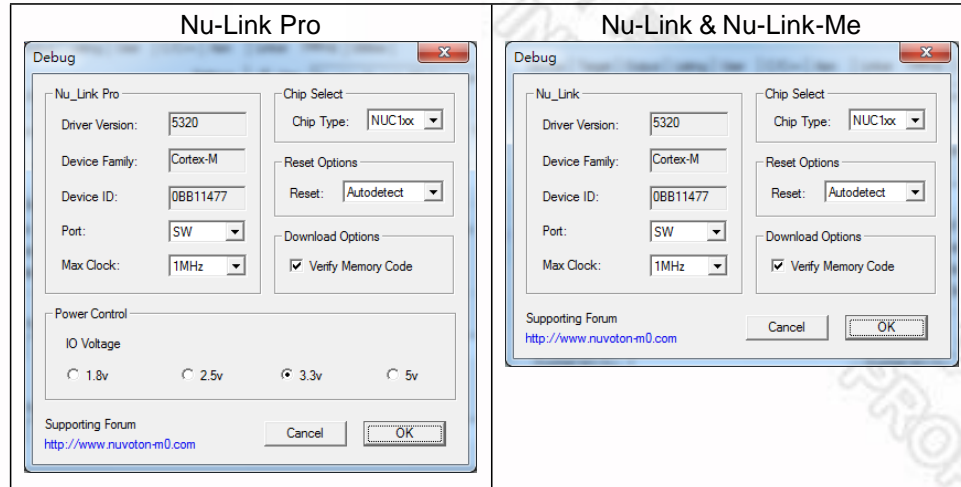


Figure 4-11 Nu-Link Adapter Parameter Settings

Table 4-1 Debugger Function Settings Description

Debug Function	Description
Driver Version	Display the Nu-Link Adapter driver version in the host
Chip Type	Specify the Target chip type
Reset	Select Auto detect to reset the target chip
IO Voltage	Specify the SWD port I/O voltage for the target chip; options include 1.8V, 2.5V, 3.3V, and 5V

Programmer Settings:

Step 6: Invoke **Project** → **Options for Target** → **Utilities**, select “**Nuvoton Nu-Link M0 Debugger**” when the **Use Target Driver for Flash Programming** option is enabled, and then select the **Update Target before Debugging** option, as shown in Figure 4-12.

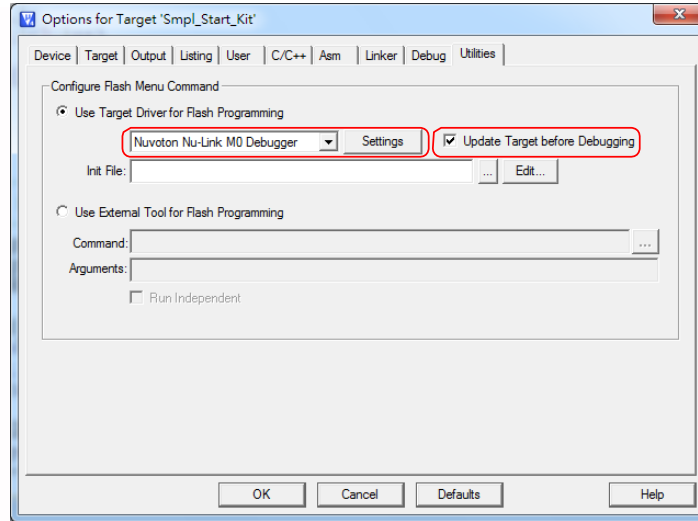


Figure 4-12 Keil RVMDK Programmer Selection

Step 7: Click the **Settings** button to open the *Flash Download* form, as shown in Figure 4-13 where the user can specify the options before or after programming with the Nu-Link Adapter.

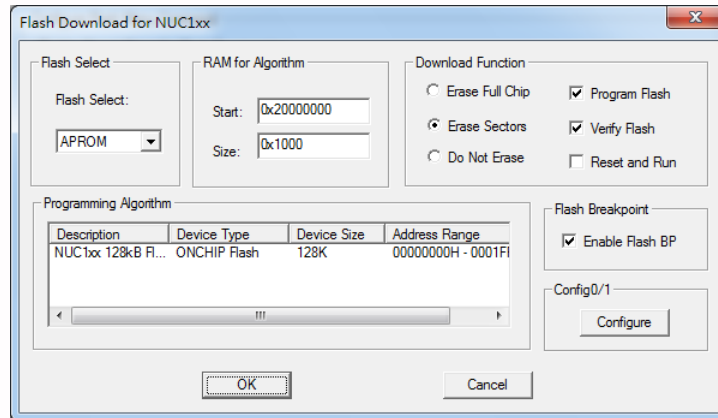


Figure 4-13 Nu-Link Adapter Programming Settings

新唐科技 NUVOTON
INTELLECTUAL PROPERTY



4.2.3 IAR EWARM

- Step 1: Install [IAR EWARM](#). Make sure that [Nu-Link Adapter Driver for IAR EWARM](#) has been downloaded and installed before setting the Nu-Link Adapter such that the IAR EWARM can recognize the Nu-Link Adapter.
- Step 2: Open IAR EWARM, and open the project to be set.
- Step 3: In the **Target** tab of the **General Options** page (through invoking **Project** → **Options**), click the button in the right of the **Device** option (make sure the **Device** option is enabled), and select “**Nuvoton** → **Nuvoton NUC100 series**” as the target chip (NUC100 series is this case), as shown in Figure 4-14.

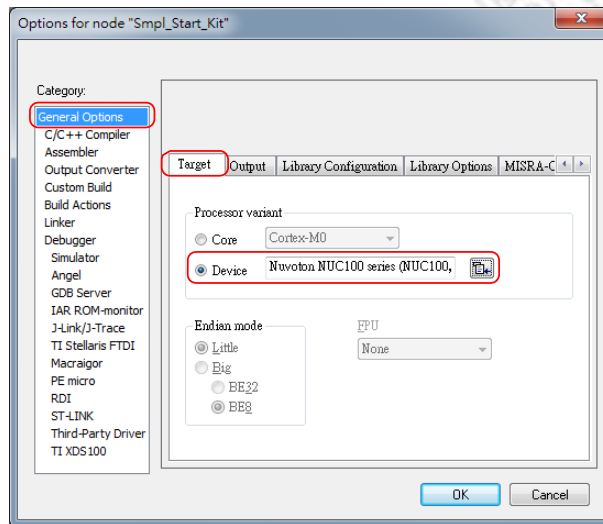


Figure 4-14 IAR EWARM Target Chip Selection

Debugger and Programmer Settings:

- Step 4: In the **Setup** tab of the **Debugger** page, select **Third-Party Driver** as the driver, as shown in Figure 4-15.

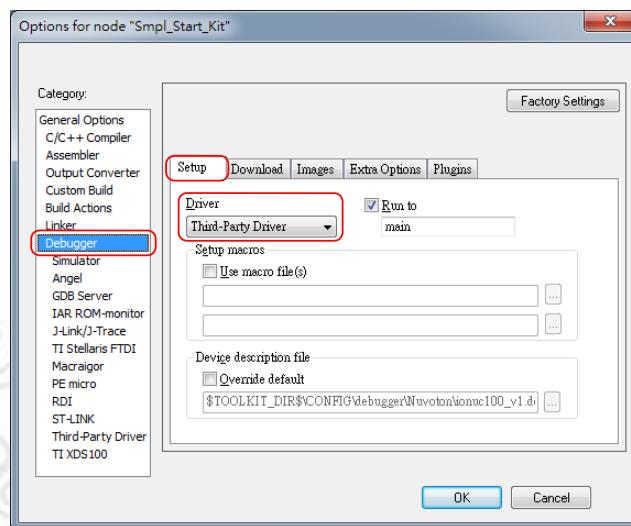


Figure 4-15 Set IAR EWARM as Third-Party Driver for Debugger & Programmer



Step: 5: In the **Download** tab of the **Debugger** page, make sure that the **Use flash loader(s)** option is selected, as shown in Figure 4-16.

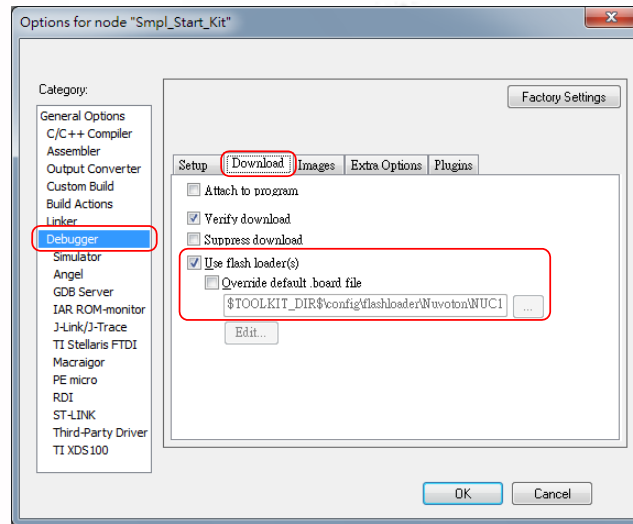


Figure 4-16 IAR EWARM Programming Settings

Step: 6: In the **Download** tab of the **Debugger** page, select the **Override default .board file** option if you want the firmware to be downloaded to APROM or LDROM, and then specify the *NUC100_APROM.board* or *NUC100_LDROM.board* file (NUC100 series is used in this case). If no file is founded, specify the following path “\$TOOLKIT_DIR\$config\flashloader\Nuvoton”, as shown in Figure 4-17.

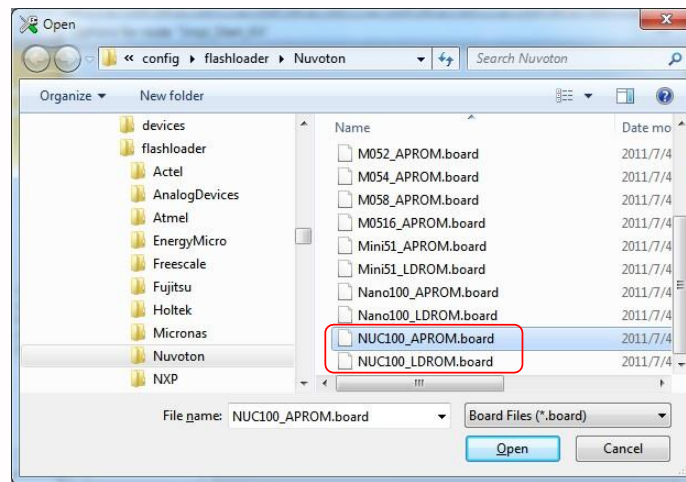


Figure 4-17 Select .board File for IAR EWARM



Driver Plugin File Settings:

Step 7: In the **Third-Party Driver** page, specify the path of the IAR debugger driver plugin “C:\Program Files\Nuvoton Tools\Nu-Link_IAR\Nu-Link_IAR.dll”, as shown in Figure 4-18.

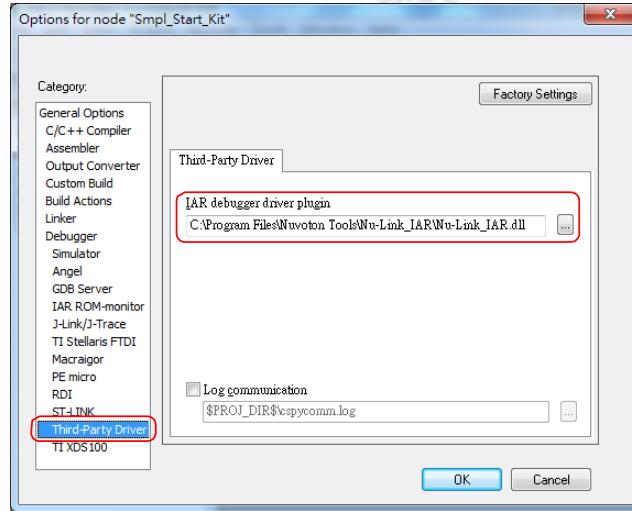


Figure 4-18 Set the Path of the IAR EWARM Debugger Driver Plugin

Step 8: Click **OK** to save the settings and return to the IAR EWARM main window.

Step 9: Invoke **Nu-Link** to open the *Nu-Link* form, select **SWD** as the Port, and specify the **Nu-Link-Pro I/O Voltage** in the **Target power control** section (3.3V in this case), as shown in Figure 4-19.

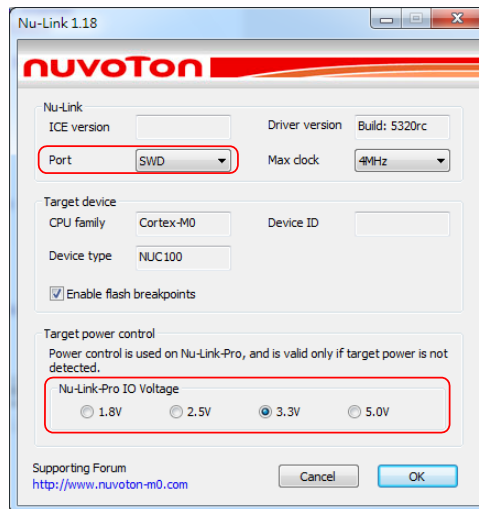


Figure 4-19 Specify the Port and Target I/O Voltage

4.2.4 CooCox CoIDE

Step 1: Install [CooCox CoIDE](#), which does not require any driver installation.

Step 2: Open CooCox CoIDE and open the project to be set. Please also refer to the [CoIDE Quick Start](#).

Debugger Settings:

Step 3: In the **Debugger** tab of the *Debug Configurations* form (through invoking **Debug** → **Debug Configurations**), select “**Nu-Link**” as the Adapter, select “**SWD**” as the Port, and click **Apply** to save the settings, as shown in Figure 4-20.

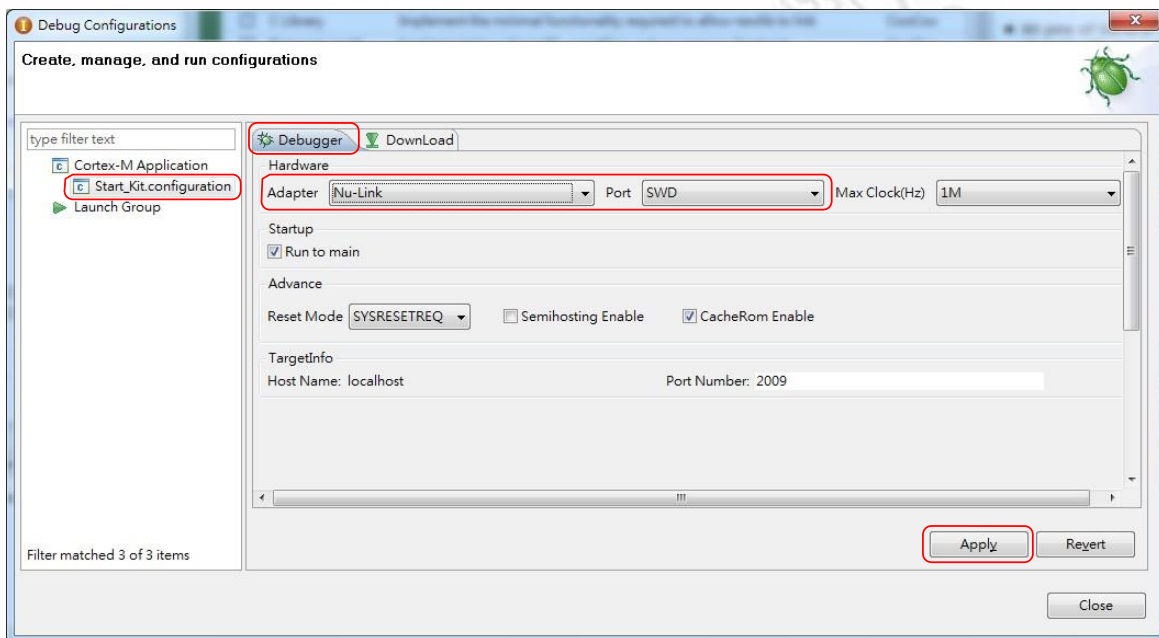


Figure 4-20 Specify the Debugger Options for CooCox CoIDE

Programmer Settings:

Step 4: In the **Download** tab of the *Debug Configurations* form (through invoking **Debug** → **Debug Configurations**), select the **Auto Download Before Debugging** or **Verify After Download** option to proceed with a specific programming, and set the Programming Algorithm path as “*C:\CooCox\CoIDE\flash\NUC1xx_128.elf*”, as shown in Figure 4-21.

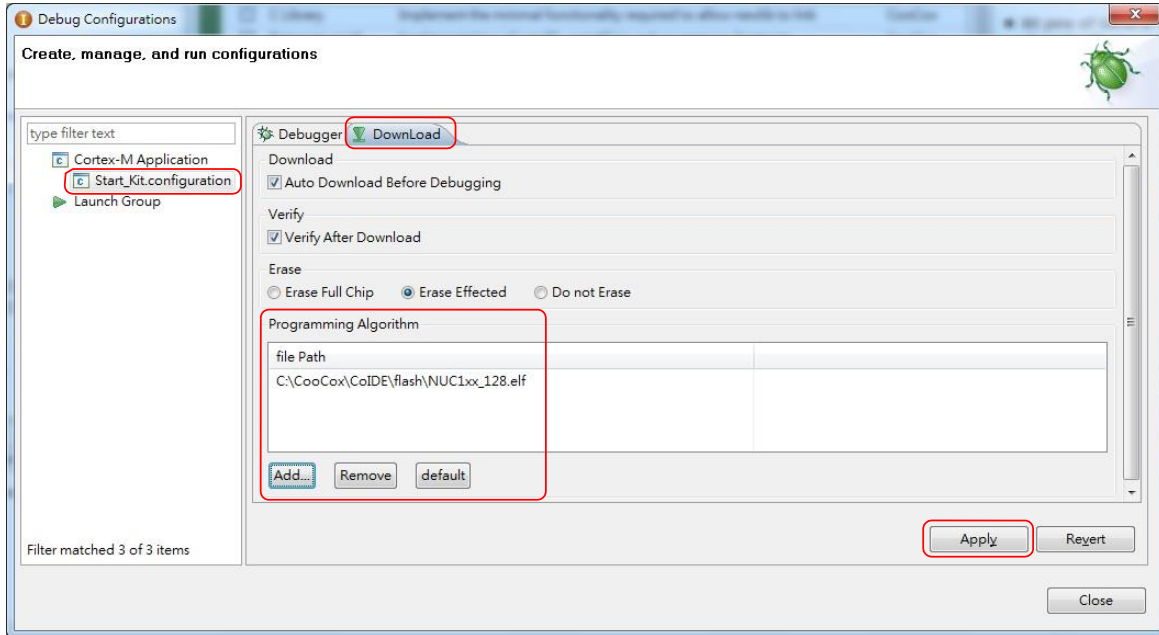


Figure 4-21 CooCox ColDE Programming Settings

Step 5: To ensure the firmware will be downloaded to APROM or LDROM, select *NUC1xx_128.elf* or *NUC1xx_LDROM.elf* file (NUC100 series is used in this case) as shown in Figure 4-22; “32, 64, or 128” in the file name means the capacity of APROM. If no specific file is founded, specify the following path “C:\CooCox\CoIDE\flash”.

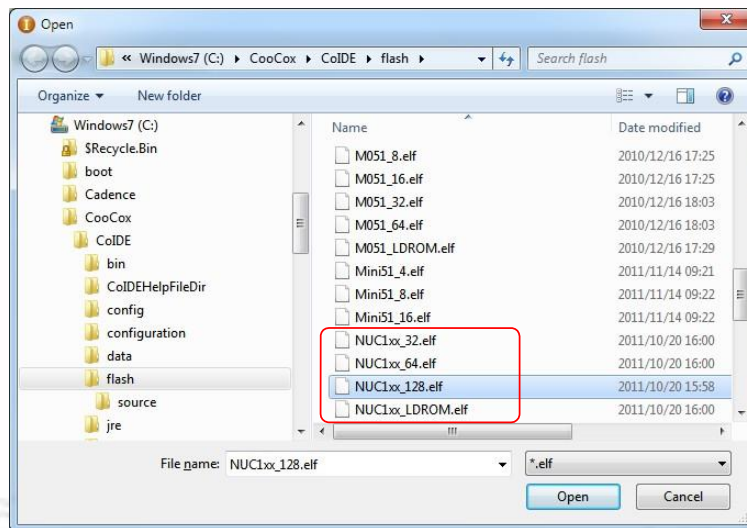


Figure 4-22 Set the Programming Algorithm File for CooCox ColDE

Step 6: At last, click **Apply** to save the settings, as shown in Figure 4-21.



5 +Appendix

5.1 Nu-Link Adapter Operating Current

When power is supplied via an USB during online programming, the operating current of Nu-Link Adapter is shown in the table below.

Table 5-1 Nu-Link Adapter Operating Current (Online Programming)

Parameter	Type	Nu-Link-Pro				Nu-Link	Nu-Link-Me	
		5.0V	3.3V	2.5V	1.8V		5.0V	3.3V
SWD I/O Mode Settings		5.0V	3.3V	2.5V	1.8V	-	5.0V	3.3V
USB Input Voltage (V)		5.0	5.0	5.0	5.0	5.0	5.0	5.0
USB Input Current (mA)		101	92	88	84	110	74	60
SWD I/O Voltage (V)		5.06	3.34	2.54	1.83	4.77	4.79	3.37

When power is supplied from a target board (SWD VCC pin) during offline programming, the operating current of Nu-Link Adapter is shown in the table below.

Table 5-2 Nu-Link Adapter Operating Current (Offline Programming)

Parameter	Type	Nu-Link-Pro				Nu-Link		
		5.0V	3.3V	2.5V	1.8V	5.0V	3.3V	2.5V
Power Supplied from a Target Board		5.0V	3.3V	2.5V	1.8V	5.0V	3.3V	2.5V
Power Supplied via an USB		Off	Off	Off	Off	Off	Off	Off
SWD VCC Input Voltage (V)		5.00	3.30	2.50	1.80	5.00	3.30	2.50
SWD VCC Input Current (mA)		64	86	117	171	100	77	62



6 Revision History

Revision	Description	Date
V1.00	Preliminary version.	2012/07/16
V1.01	<ol style="list-style-type: none"> Update section 3.1.3 Direct Register Control Interface & 3.1.4 Semihost. Revise section 4.2.1 ICP Tool step number error. 	2014/10/28

Important Notice

Nuvoton Products are neither intended nor warranted for usage in systems or equipment, any malfunction or failure of which may cause loss of human life, bodily injury or severe property damage. Such applications are deemed, "Insecure Usage".

Insecure usage includes, but is not limited to: equipment for surgical implementation, atomic energy control instruments, airplane or spaceship instruments, the control or operation of dynamic, brake or safety systems designed for vehicular use, traffic signal instruments, all types of safety devices, and other applications intended to support or sustain life.

All Insecure Usage shall be made at customer's risk, and in the event that third parties lay claims to Nuvoton as a result of customer's Insecure Usage, customer shall indemnify the damages and liabilities thus incurred by Nuvoton.

Please note that all data and specifications are subject to change without notice.
All the trademarks of products and companies mentioned in this datasheet belong to their respective owners.